

ZING Standard Laser Engraving Cutting Machine

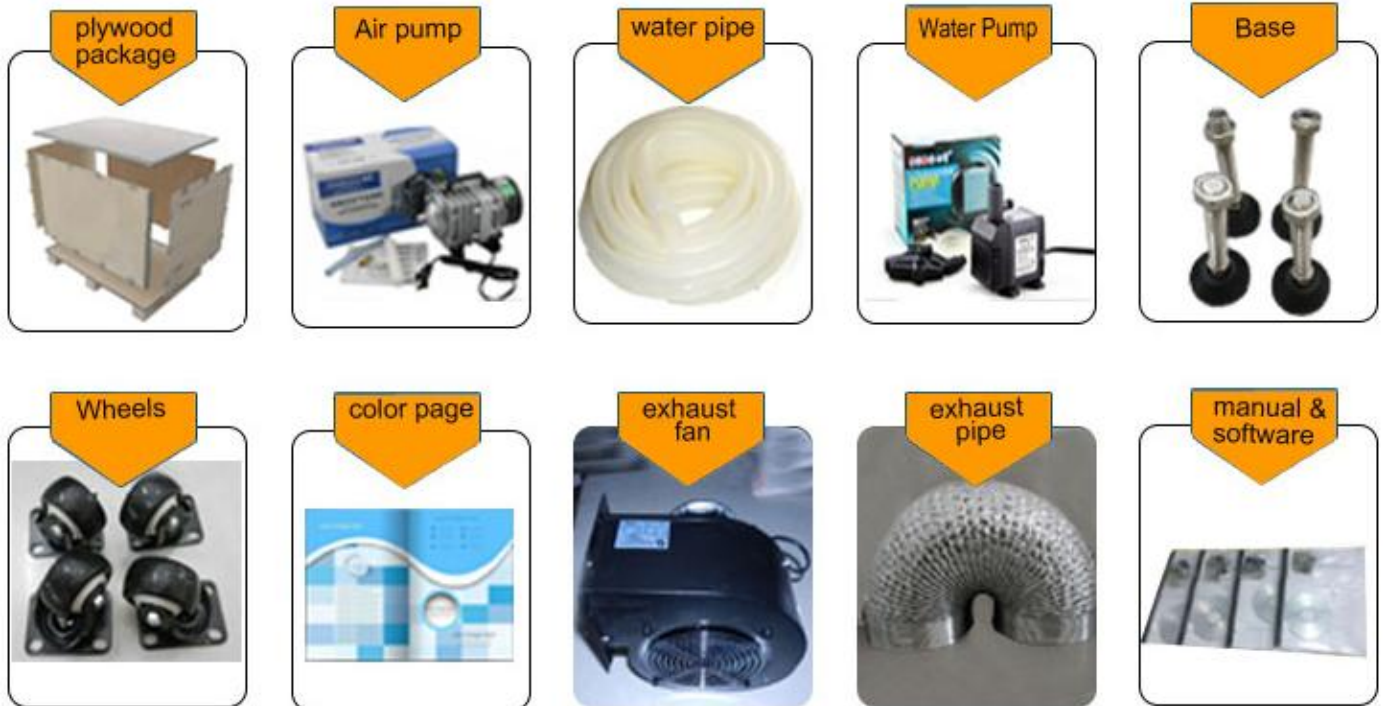
Z6040 / Z9060 / Z1390



Product Features:

- The "front" and "back" of our laser machine can be open, suitable for super-length material process.
- Exclusive no water warning and automatic protection system, to protect the working life of laser tube effectively. The power control system has exclusive automatic protection equipment to ensure the stability and safety of the machine to the best.
- LCD control panel in English, Spanish, Portuguese, French, Turkish, German, Korean, Russian etc, convenience of operation control.
- Colorful panel can display graphics being processed.
- Import Taiwan Hiwin square orbit with high engraving precision
- Offline control system which can not only work without computer, but also connect to U disk, USB communication.
- Imported mirrors, with good ability of reflection and focusing, long working life.

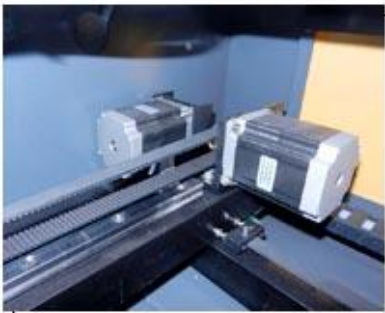
Free provide:



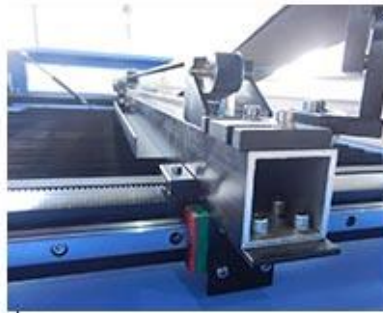
Technical Parameter:

Product model	Z6040	Z9060	Z1390
Max working area(mm)	600x400	900x600	1300x900
Laser power	60W/80W/100W/120W/150W/180W		
Laser Types	Hermetic And Detached CO2 Laser Tube		
Engraving speed(mm/min)	0-75,000		
Cutting speed(mm/min)	0-40,000		
Minimum letter	English 1 x 1mm		
Location precision	≤0.01mm		
Resetting positioning accuracy	0.01mm		
Driving system	Stepper		
Software	Lasercut 5.3 or RDworks V8		
360° slope engrave	Yes		
Power supply	AC 220V(or 110V)/50~60HZ		
Operating temperature	0 - 45°C		
Operating humidity	5 - 95%		
Laser output control	1-100% control panel and software setting		
Highest scanning precision	50-1000DPI		
Compatible software	CorelDraw, AutoCAD, Photoshop		
Auxiliary Devices	Exhaust fan and Exhaust pipe		
Cooling mode	Water-cooling and protection system		
Operating system	Window 98/ME/2000/XP/VISTA/2007		
Graphic format supported	BMP, CIF, JPEG, TGA, TIFF, PLT, AI, DXF, DST (TIANDAO Embroidery Software), DWG, CDR, etc		
Accessories	Water pump, air pump, exhaust fan, base, wheel etc		

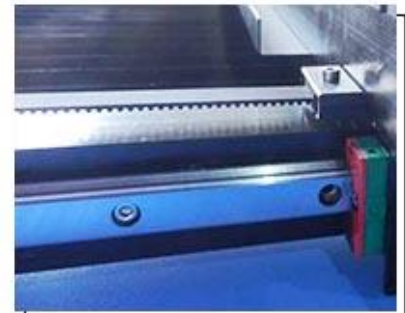
Details Introduction :



Step motor



Belt wheel & X axis structure



Hiwin liner guide rail



LCD control panel



Laser power supply



Mainboard



Imported lens and mirror



Exhaust outlet



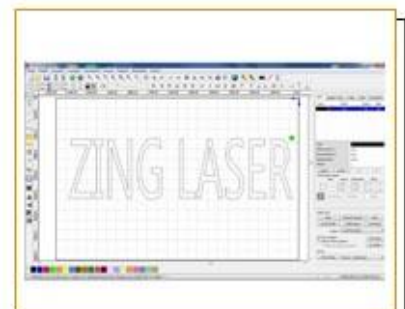
Sockets



Laser head



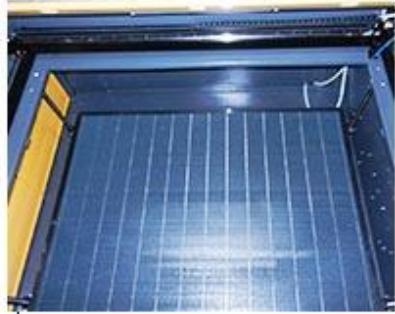
Laser tube



Laser software



Aluminum strip table



Honeycomb table



Control system

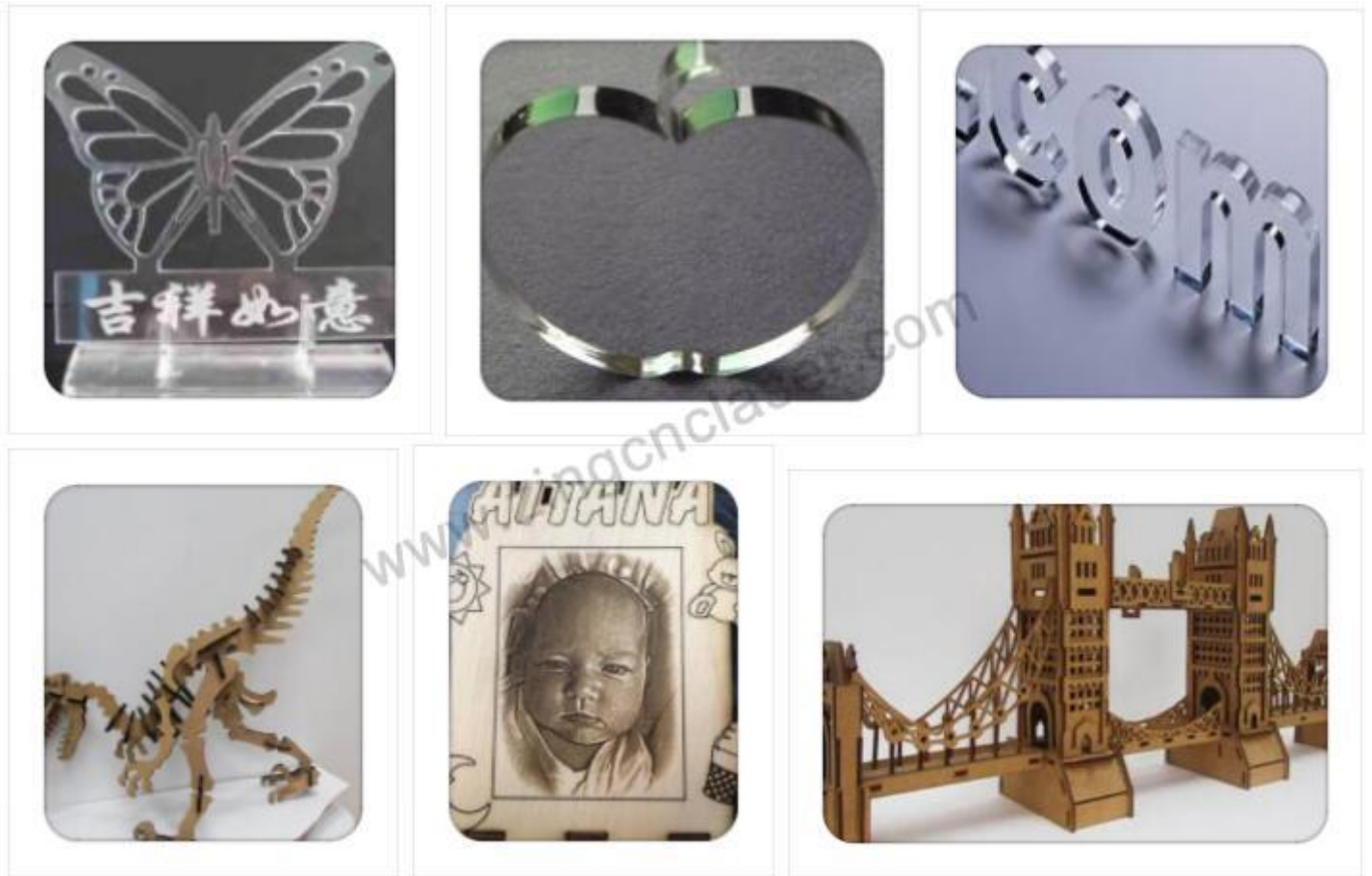
Field of application:

Available materials: acrylic, PVC, rubber sheet, plastic, crystal, glass, wood, bamboo, oxhorn, figuline, marble, leather, cloth, double-color board, etc. nonmetal materials. Can also engrave onto metals with the use of an additive laser marking material like "Thermark".

Comprehensive application: advertisement, arts and crafts, toys, textile garment, leather, car, mechanism, electron, building upholster, timekeeper and jewelry industry and so on.

Samples of acrylic laser engraving machine:





Contact US:

Shandong Zing International Trade Co.,Ltd

Tel: 0086-531-88976806; Fax: 0086-531-88976807

Email: info@jdcutters.com; Skype: jdnancy

www.cnclasermachinery.com; www.zingcnclaser.com